



Weather Siren Promotion

Spring 2024

Distributed by:
Frontline Warning Systems
8004 Aetna Ave NE
Monticello MN 55362
763-295-3650
763-670-3500 (mobile)
Support@frontlinewarningsystems.com
Contact: Adam Green, President

WHELEN
MANUFACTURED IN AMERICA



VORTEX SERIES

WHELEN
MANUFACTURED IN AMERICA

OUTDOOR ALL HAZARDS ROTATING WARNING SIRENS

Frontline Warning Systems is offering a Spring 2024 Promotion in continued partnership with Whelen Engineering. This is the same Whelen that you are familiar with for your Emergency Lighting Products on squad cars, fire trucks, plow trucks and first responders! This is a great opportunity to get a new or additional Warning Siren for your community at a discounted price!

Each siren comes with full turn-key installation. Each siren also includes SOLAR POWER! You will not incur additional fees for electrical service! A new 55ft Class 2 wood pole is included. To view the warranty visit: www.whelenmassnotification.com

Option #1: Rotating Vortex R4

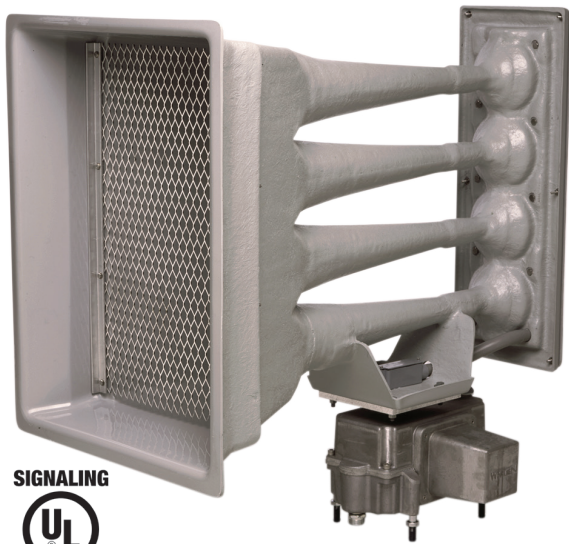
6000ft estimated 70dB coverage!

Turn-Key installation with pole and solar:
\$32,550

Option #2: Omni-Directional OA3

2400ft estimated 70dB coverage!

Turn-Key installation with pole and solar:
\$28,000



Whelen Engineering Company, Inc.

Ordering Information:

Name: _____

Title: _____

Organization: _____

Email: _____

Phone: _____

Signature: _____

Terms:

- #1: 50% due within 30 days of order. Balance will be invoiced (NET30) once installation is completed
- #2: Installation will be coordinated with others in the area, in no event will installation occur beyond September 30, 2024. Sirens will be ordered in groups on a bi-weekly basis. All orders due by April 30, 2024 to secure this pricing. Regular in-season pricing is around \$45,000 for a Vortex R4.
- #3: To proceed with order, please sign a copy of this estimate and return to Frontline Warning Systems at Support@frontlinewarningsystems.com or fax to 763-295-3650. An installation representative will then coordinate activation methods, site location and delivery with the user. A purchase order or requisition may also be issued.
- #4: Installation includes standard dirt/soil locations within 20ft from paved, crushed rock, or concrete road or parking lot with no other obstacles. Any excavation that takes longer than 1.5 hours will be charged at \$300/hr additional and such instances occur from sand, heavy rocks or abandoned services. Normal digging takes 20-30 minutes. Selected site must have good southern exposure for solar array.
- #5: Itemized pricing and warranty information is available from Frontline Warning Systems.
- #6: Activation is limited to VHF or UHF radio frequencies on either Two-Tone (QCII) or DTMF